

# THE PINE RIDGE

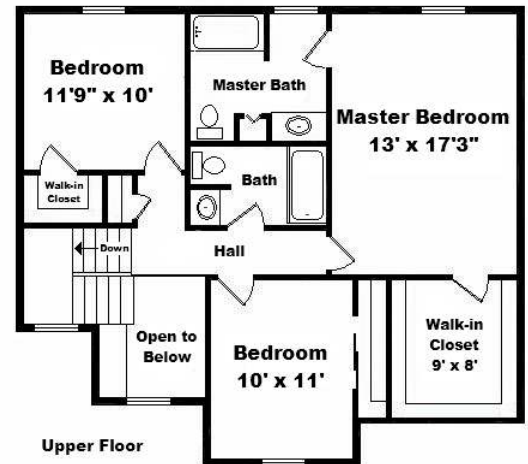
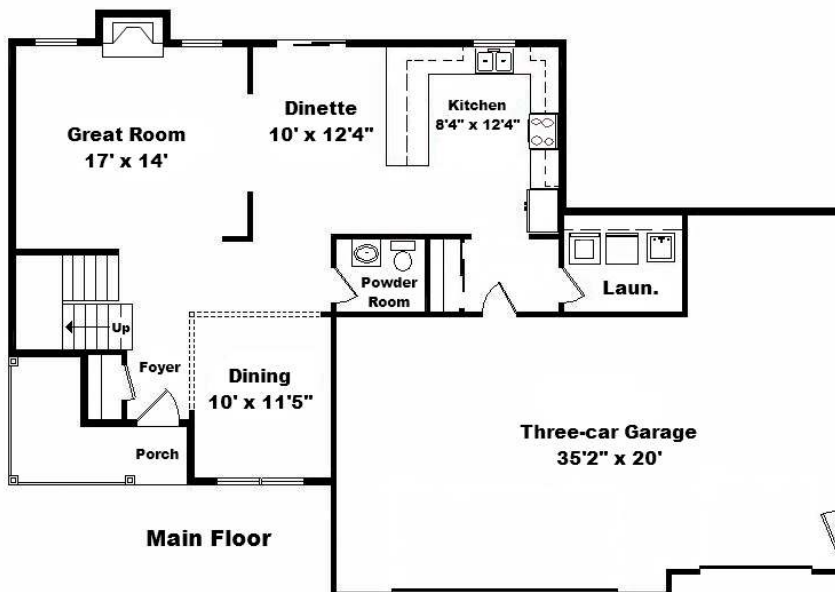


## FEATURES

- 3 Bedrooms
- 3 Car garage
- 2 ½ Bathrooms
- Deluxe Kohler fixtures
- Laundry room on main level
- Fireplace in great room
- Hardwood flooring in kitchen, dining room, and great room
- Maple cabinets
- Ceramic tile in bathrooms & foyer
- Six panel doors throughout the house
- Brick work on exterior
- Maintenance free exterior
- 2 x 6 exterior walls
- High efficiency furnace

**GROWING FAMILIES WILL LOVE THIS PLAN!** With a welcoming porch, this home offers comfort in its open design. The great room features a fireplace for warm nights at home and a dinette for starting the morning. Formal entertaining is enhanced by the dining room located off of the entry way, and a full laundry room and powder room are conveniently located on the main floor. The upstairs master bedroom offers its own bathroom and large walk-in closet. The two additional bedrooms and second full bath are ideal for a growing family.

*Base Price \$* \_\_\_\_\_



GENERAL CONTRACTOR • NEW HOMES  
REMODELING

P.O. Box 338 • Fredonia, WI 53021  
920-994-8101

[www.championshipbuilders.com](http://www.championshipbuilders.com)

**"HELPING WISCONSIN FAMILIES BUILD THEIR DREAMS FOR OVER 15 YEARS"**