

# THE OAKHURST II

2,581 Square Feet



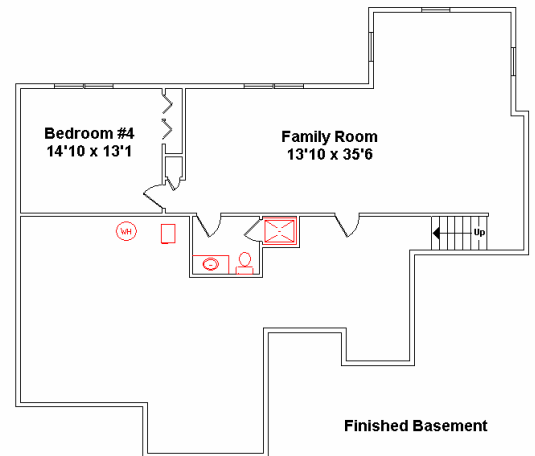
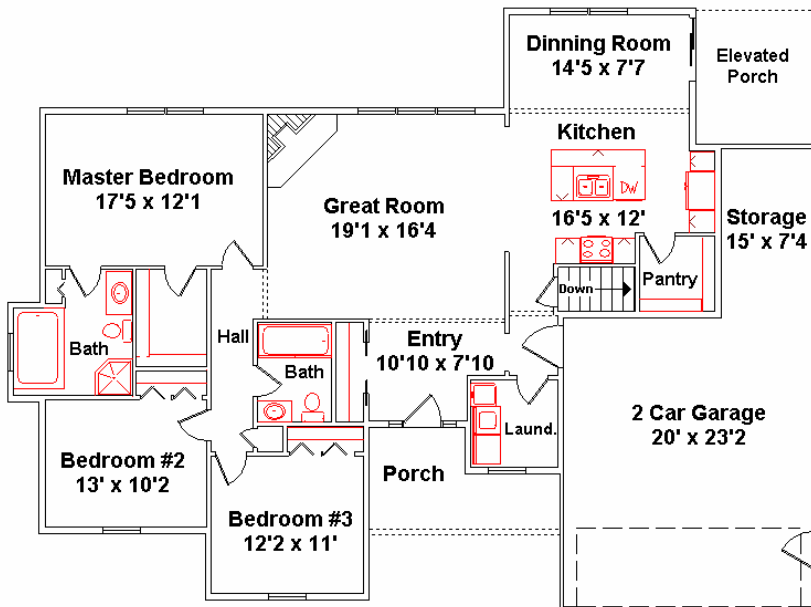
Picture of a comparable property

## FEATURES

- 4 Bedrooms
- 2 Car garage
- 3 Full bathrooms
- Cathedral ceiling in great room
- Laundry room on main level
- Tray ceiling in master bedroom
- Hardwood flooring in kitchen, dining room, and great room
- Maple cabinets
- Ceramic tile in bathrooms & foyer
- Six panel doors throughout the house
- Brick work on exterior
- Maintenance free exterior
- 2 x 6 exterior walls
- High efficiency furnace
- City water and sewer
- Covered back porch

**FOR THE GROWING FAMILY!** This charming one-story traditional home greets visitors with a covered porch. The modern kitchen opens to both the dining room and the spacious great room where a fireplace is the focal point. An ample owner's suite includes a full bath tub and separate shower, as well as a walk-in closet. Two additional bedrooms are located at the front of the house. A full-service laundry room is also located on the main floor. The finished basement includes a fourth bedroom/home office, a third full bath, and a large family room.

## Base Price \$



**CHAMPIONSHIP BUILDERS, INC.**  
GENERAL CONTRACTOR • NEW HOMES REMODELING

P.O. Box 338 • Fredonia, WI 53021  
920-994-8101

[www.championshipbuilders.com](http://www.championshipbuilders.com)

"HELPING WISCONSIN FAMILIES BUILD THEIR DREAMS FOR OVER 15 YEARS"

## INSIDE THE OAKHURST II



*Pictures of a comparable property*



This property is being built in Port Washington's Greystone subdivision. Greystone is near historic downtown Port Washington with its shops, restaurants, festivals, and fabulous marina. For more information on Port Washington, visit [www.ci.port-washington.wi.us](http://www.ci.port-washington.wi.us).

### Directions:

From Milwaukee: Take I-43 north to Hwy 32. Exit and go north on Hwy 32 for approximately 2 miles to CR-LL. Go north (left) approximately ½ mile to Sunset Road. Go west (left) for ¼ mile.

From Sheboygan: Take I-43 south to Hwy 33. Exit and go east to Northwoods Road. Go south (left) for approximately ½ mile. The road curves to the east and changes to Sunset Road.

 **CHAMPIONSHIP BUILDERS, INC.**

**920.994.8101**

[www.championshipbuilders.com](http://www.championshipbuilders.com)