

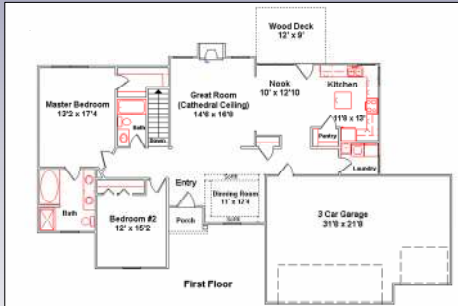
The Cedarcrest

1,710 Square Feet



2 bdrms, 2 full baths, 3 car garage

The Cedarcrest features a great room open to the breakfast nook and kitchen. There is a formal dining room for entertaining, 9' ceilings throughout, and a city hall brick fireplace. The master suite offers both a tub and a walk-in shower.



**HOUSE & LOT PACKAGES AVAILABLE IN
KEWASKUM, RANDOM LAKE,
PORT WASHINGTON**

Why build with CBI?

Our goal at CBI has always been to achieve the highest quality possible for our customers. We only use the building industry's best products, and our team of professional carpenters work closely with you to ensure that the end result of your project is everything you hoped for.

CBI is also dedicated to providing customers with the high level of service they deserve. We remain flexible throughout the building process to accommodate our customers and make the process less stressful.

From the largest project to the smallest, CBI is committed to delivering on all of our customer's expectations. **At CBI, you work with the builder, not a sales rep.** That is what makes CBI a contractor customers come back to again and again.

CBI's Building Philosophy:

- We realize home means more to our customers than just a place to hold their belongings and sleep at night. It represents security and safety for their families. Our customers deserve a final product based on the finest traditions of **Craftsmanship**.
- We recognize that the materials we use reflect strongly on our reputation, and must continue to represent our work long after we are gone. We are committed to using only the highest **Quality** materials in our work to ensure our customers continued satisfaction.
- We take **Pride** in our work so our customers have reason to take pride their choice to hire us.
- We know our continued success is dependent on our **Dedication** to fulfilling our customers expectations.



P.O. Box 213
Fredonia, WI 53021

920.994.8101

www.championshipbuilders.com

No matter where you are in life . . .



**Just starting
out . . .**



**Or starting to
scale back . . .**

**Your New Home Should
Compliment Your Lifestyle!**

CUSTOM BUILT HOMES



**"HELPING WISCONSIN
FAMILIES BUILD THEIR
DREAMS FOR OVER 15 YEARS!"**

Your new CBI home

We work with new home buyers at every stage of life. While their needs and resources may be vastly different, our young and mature customers both find what they are looking for in a CBI home. Our most popular homes provide open, unrestricted living areas that welcome friends and family. This concept works equally well for a small family building their first home, or empty nesters who are ready to enjoy the next stage of their lives.



CBI customers want a home that reflects their desire for natural beauty and views that they can enjoy from within their homes. That's why CBI includes an

abundance of windows to provide a source of natural light. Special features such as cathedral ceilings for a sense of openness, and built-in bookcases to shelve a personal library, help to give a house its own unique character. CBI homes include hardwood flooring and ceramic tile throughout.

CBI homes appeal to both young families and empty nesters because they often need many of the same things, but for different reasons. With CBI you have the ability to customize your home with as many, or as few, amenities as you like. Include a central vacuum system or maintenance free exterior to make your life a little easier. Your imagination turns the house we build into the home you want to live in.



CBI customers are typically interested in mid-sized homes (1600 to 2500 square feet). Young families with children require affordability, but still need space to play. While grandparents may not want the burden of a large home anymore,

but still need space for their children and grandchildren to let loose when they visit. Our open floor plans offer a feeling of roominess that you wouldn't expect for the square footage. You also have the option of finishing the basement for additional entertaining and living space.

CBI can customize any of our standard floor plans to suit your needs, or work with plans you already have.

CBI Standard Features

All CBI homes include these standard features in addition to any special features you decide to include during the design phase of the project. All of our standard plans are fully customizable to meet your needs.

EXTERIOR FEATURES

- Dimensional Shingles (30 year)
- 2 x 6 exterior walls
- Brickwork on exterior
- Maintenance free exterior

ENERGY EFFICIENT FEATURES

- Insulated garage doors
- Insulated exterior doors
- Dual pane Low E vinyl windows
- 50 gallon hot water heater
- High efficiency furnace

CONSTRUCTION FEATURES

- Cat 5 wiring (phone)
- 3/4" T&G sub-flooring (nailed and glued)
- 16" on center studs
- TJI "Silent Floor" system

INTERIOR FEATURES

- Hardwood flooring
- Ceramic tile in bathrooms
- 6 panel doors throughout
- Garbage disposal
- Full basement (finished optional)

TURN KEY PRICING OR COST PLUS FOR QUALIFYING BUYERS

The Oakhurst II

2,581 Square Feet



4 bdrm, 3 full baths, 2 ½ car garage, finished basement

A fantastic open floor plan that offers plenty of storage and closet space, a covered back porch, large kitchen and dining room, and an expansive great room and cathedral ceiling. The master suite features a tray ceiling, as well as both a tub and a walk-in shower. The 4th bedroom is located in the finished basement.

